

**LARKIN STREET
YOUTH SERVICES**
HIV AND HCV
SERVICES



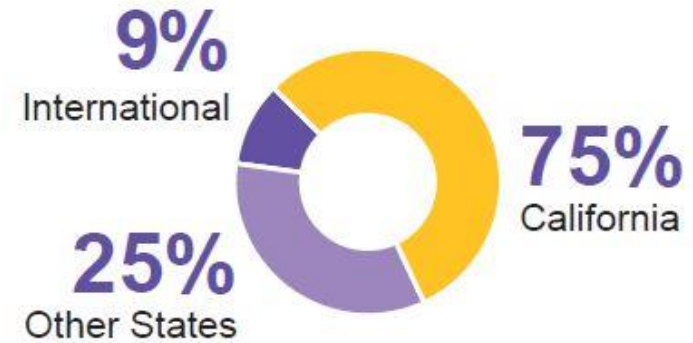
OUR MISSION:

To create a continuum of services that inspires youth to move beyond the street.

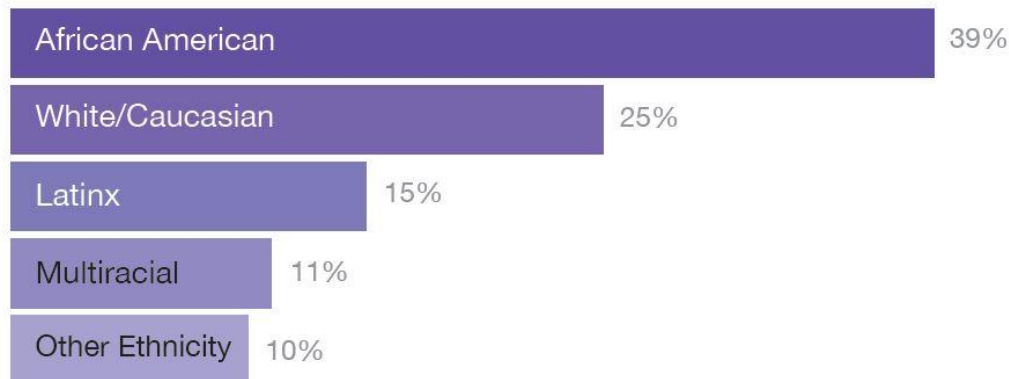
We nurture potential, promote dignity, and support bold steps by all.

2,500 YOUTH WALK THROUGH OUR DOORS EACH YEAR

Over half are Bay Area natives



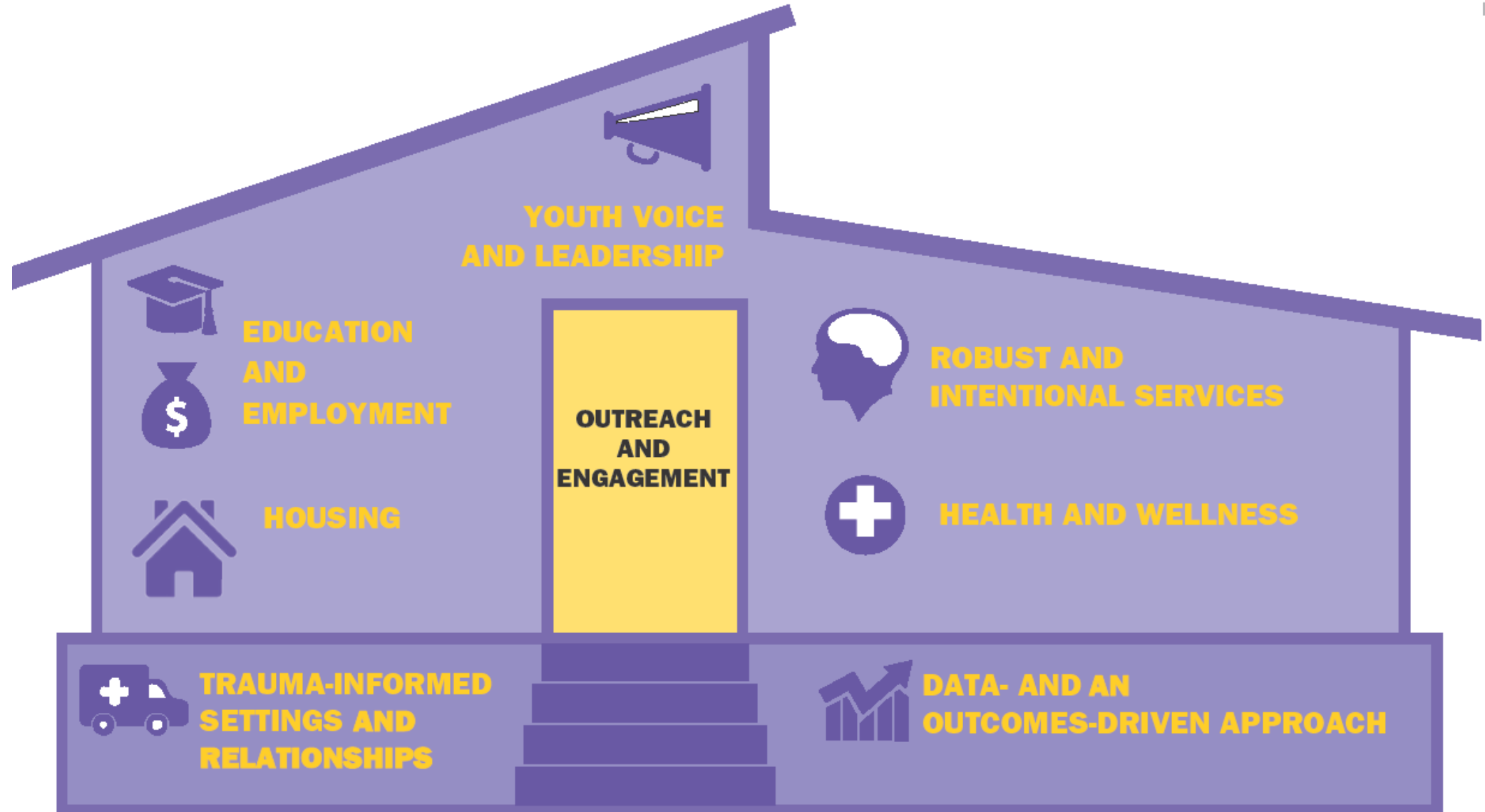
They are mostly youth of color



Many identify as LGBTQ



LARKIN STREET'S CONTINUUM



ASSISTED CARE PROGRAM

Hyde Street

- Serve up to 12 HIV-Positive young people, 18-24 years old
- Two-year Transitional Living Program
- Includes:
 - Case Management
 - Medication Assistance
 - Living Skills including
 - Build savings
 - Work/School
 - Other Psycho-Social Support
 - Linkage to adult medical care and services

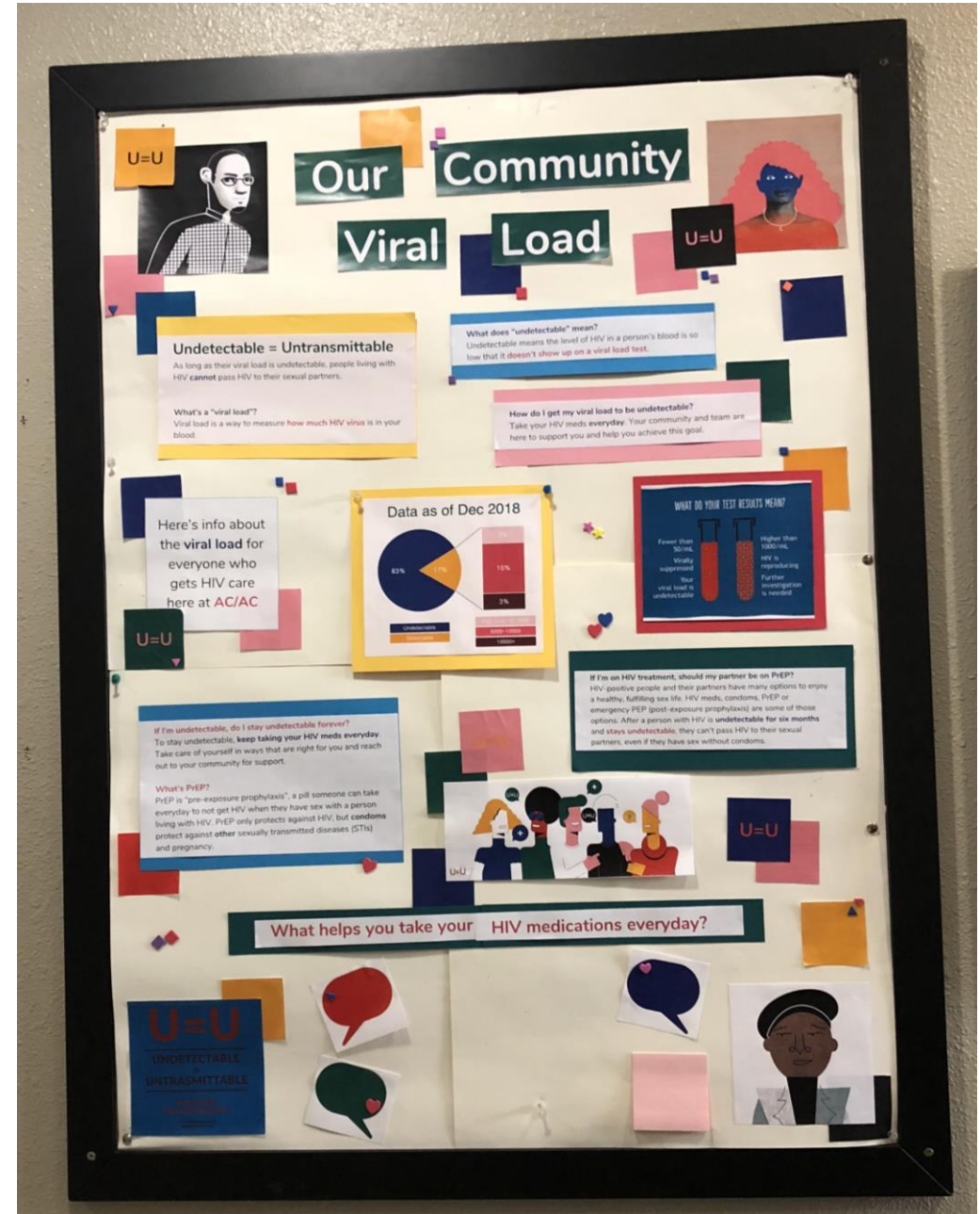
ASSISTED CARE PROGRAM

Hugo Street

- Serves up to 8 HIV-Negative young people – 18 to 24 y.o.
- Higher risk for HIV infection
- Two Year Transition Living Program
- Includes:
 - Case Management
 - PrEP and other medical care
 - Behavioral Health
 - Living Skills – work/school, savings

HOUSING: A PUBLIC HEALTH INTERVENTION

- Medical stabilization
 - Hepatitis C
 - Vaccination
- Intersections with other public health interventions



ASSISTED CARE: TRENDS AND CHALLENGES

Trends

- High adherence to ARV regimens
- STI infections very common
- Young adult intersectional identity development
 - POC
 - PLWHIV
 - LGBTQI+
 - Other social roles

Challenges

- Frequent dual- and triple-diagnoses (in addition to HIV infection)
 - Substance Use Disorders
 - Methamphetamine
 - Alcohol
 - Mental Health Disorders
 - Depression
 - Anxiety

HIV AND HCV PREVENTION SERVICES

- Rapid HIV Testing*
- Rapid HCV Testing*
- Linkage to Care *
- HCV Treatment Navigation*
- PrEP Navigation*

* These services are integrated and co-located with STI testing and treatment, and primary care.

HIV AND HCV PREVENTION SERVICES (CONTINUED)

- PrEP peer health educators
- Seeking Safety groups
- Harm Reduction Groups
- Staff training
- Harm Reduction Supplies



Rapid testing 2018/2019

	HIV	Hep C
# of tests	247	124
First time tests	46	Not collected
Gender	31% female, 60% male, 6% transgender/GNC/other	27% female, 62% male, 7% transgender/GNC/other
Race	22% Latino, 37% AA, 4% Native American, 2% Asian, 5% HI/PI, 32% white, 20% unknown	23% Latino, 31% AA, 4% Native American, 2% Asian, 6% HI/PI, 37% white, 21% unknown
Homeless	71% homeless or unstably housed	79% homeless or unstably housed
Risk Factors	22% MSM, 16% IDU	19% MSM, 26% IDU
New cases identified	0	Reactive tests: 5 (3.5%)

PREP NAVIGATION

On-site PrEP navigators from DPH and/or Lyric provide most of our PrEP navigation.

8 hours of on-site navigator time per week

During the last year

- Made 50 referrals of testing clients interested in PrEP to PrEP navigation or PrEP Providers
- Had conversations about PrEP during 168 test counseling sessions

The CHPY PrEP navigator Alé currently has 23 active PrEP Navigation patients across Larkin Street and Huckleberry clinics.

PREP NAVIGATION

- Models
 - + On-site, proactive, collaborative PrEP navigators
- Challenges
 - Personal and structural
- What has worked
 - + Proactive navigators collaborating where youth already get services
- What is needed
 - + Different support than adults
 - + Information sharing between CBOs, navigators, and clinics

PREVENTION: TRENDS AND CHALLENGES

Trends

- More youth have heard about PrEP
- More youth reporting IDU
- Increasing STIs rates
- Low HCV knowledge
- Youth accessing testing for counseling time
- Incentives support youth engagement

Challenges

- Space
- Sharing information
- Accessing other locations/ programs
- Staff turnover
- Insurance barriers (for HCV treatment)
- Staff training and awareness raising

MULTI-SECTOR COLLABORATION



YOUTH SERVICES



YOUTH SERVICES

Larkin Street Youth Services

Program directors, program managers, front-line staff (case managers, counselors, rapid test counselors), Youth Advisory Board members, research and evaluation team, clinicians, professional development, coordinated entry staff



School of Nursing Department of Community Health Systems: Primary grantee providing capacity building support

Faculty, Staff, Researchers, Graduate Nursing Students



San Francisco Department of Public Health: Community partner, clinic on-site

Nurses, providers, PrEP navigators, patients, trainers, collective impact projects



SAMHSA: Funder (grant number 1H79SP021285-01)



Gilead Foundation: Funder



Eva Kersey

Manager of Health Interventions
and HIV Prevention

ekersey@larkinstreetyouth.org

(415) 673-0911 ext. 325

Patrick Barresi

Associate Director of Programs

pbarresi@larkinstreetyouth.org

(415) 673-0911 ext. 417

THANK YOU!



YOUTH SERVICES